



Advanced Locks And Biometric Access

اقفال المتقدمة والوصول بلهوية



For Further Information,

Visit Now: [alba.com.qa](http://alba.com.qa)

# Solar Private Parking Locks



## Features

Automatic parking saver with inbuilt control unit. Ideal to preserve your own parking space against un authorized use.

Available with in-built solar panel or 230V battery.

The stainless steel structure makes it virtually indestructible. In case the curved arm is hit by a vehicle, the spring system inside prevents damage and brings the arm back into position.

Safe and precise thanks to the encoder control, it is also simple and easy to install. After fixing it to the ground it does not require any setting. The control unit is pre-programmed.

Practical, it can be installed anywhere. The in-built photovoltaic panel makes it suitable for use in any condition.

Locking Distance            620mm  
 Protection Level            IP 54  
 Opening Time                8 sec



MECHANICAL SHOCK ABSORBER



SOLAR PANEL  
(PARKSUN VERSION)



STAINLESS STEEL ARCH



MANUAL RELEASE MECHANISM



REMOTE CONTROL



### TECHNICAL DATA

#### GENERAL CHARACTERISTICS

	PARKSUN	PARKLINE
Mains power supply	Vdc 12	12
Battery	Vdc 12	12
Battery power supply	AH 7	7
Solar panel power	W 5	-
Power consumption in standby	mA 1	1
Motor electrical input	A 1	1
Opening / closing time	s 8	8
Operating temperature range	°C 55+...°20-	55+...°20-
Protection grade	IP 54	54
Weight	Kg 23	23

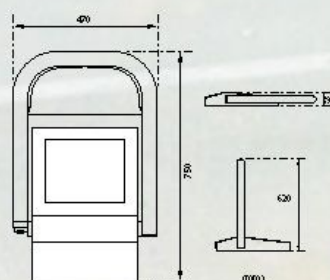
#### BUILT-IN RECEIVER CARD (S504)

Reception frequency	MHz 433.92	433.92
Number of channels / Number of functions	No 1/4	1/4
Number of stored codes	No 1000	1000

#### OVERALL DIMENSIONS

470 x 750 mm, height 620 mm (94 mm lowered arch)

### OVERALL DIMENSIONS



# SUNPAI

Stopblock 632

**Features:**

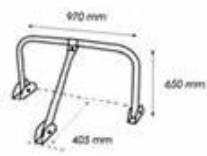
1. Easy to be installed or removed.
2. Temperature range: °50~ 20-C
3. Endure all weather and water conditions.
4. Easy to be seen in dark and attract drivers' attention.
5. Keep your parking space only by raising up the parking lock.



Stopcrash 608



Anti-friction washes



Cast iron feet

Concrete fixators included

Code	Color	Ø mm	Length mm	Eg
STOPCRASH 50	Yellow	55	970 x 405 x 450	14,00
STOPCRASH 100	Blue	55	970 x 405 x 450	14,00
STOPCRASH R	Red	55	970 x 405 x 450	14,00
STOPCRASH R 50	Red	55	970 x 405 x 450	14,00
STOPCRASH R 100	Red	55	970 x 405 x 450	14,00
TRU FIX 1 SB.		-	-	0,07

## Manual Parking Locks

Keep your parking space only by raising up the parking lock.

*12 years france quality*



# SUNPAI



Unschlagbar  
sicher.

*Splashing Waterproof and Electric Shock Proof*

## UK Extension Socket

Water Proof - Code No: GBP1340-A

Product Dimension:

**300<sub>mm</sub> x 70<sub>mm</sub> x 38<sub>mm</sub>**

Wire length: 2m

IPX6 Waterproof

Max Load 3250W

Compliant With Certificates

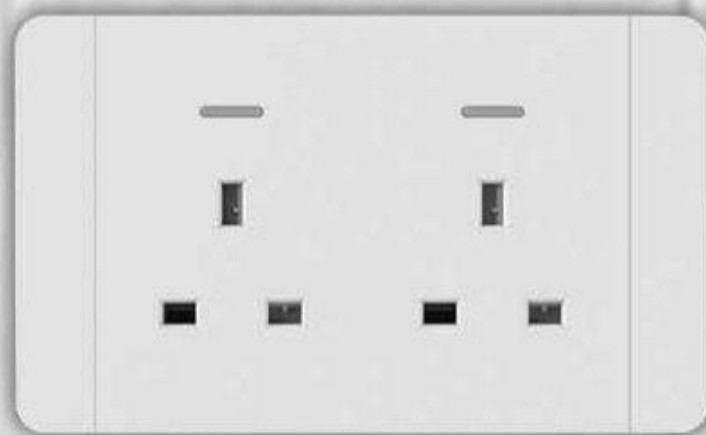
BS1363/SS145/MS 589/IEC60884-1

8 International PCT Patents Appliance

Current: 13A - Voltage: 250V



## Wall Sockets



Waterproof



Electric Shock Proof



Anti-leakage



Water and  
Electricity Isolation



Overload Protected



ABS+PC  
Flame Retardant

For More Details [www.alba.com.qa](http://www.alba.com.qa)

# EPIC

FUTUREPROOF



**FLAWLESSLY  
FLUSHED**

**STATE OF THE ART  
IN TECHNOLOGY  
AND DESIGN**

*SYNC AUTO-2*



**SYNC AUTO 2C**



**2Way**

PIN  
NUMBER

+

RFID  
CARD

Automatic panel recognition  
Safe multi-touch number pad  
Eliminates traces of pin numbers  
Auto-Lock • Re-Lock • Double-Lock feature  
Anti-Prank • Anti-Theft • Anti-intruder Alarm  
Anti-Shock • Anti-Fire • Anti-Hacking system

CLASS

**SPECIFICATION**

- Manual lock/Unlock lever
- Random number features
- Manual lock mode
- Double authentication feature
- Deadbolt error alarm
- Low battery and replace battery alarm
- Internal force lock
- Digital number pad
- Activity LED
- Status notification
- Volume setting
- Etiquette mode
- Pin/RF card authentication

**FEATURES**

- Specialty designed for glass doors
- Authentication Pin/RF card
- Made of high-graded Aluminum and Zinc Die-Cast
- Emergency powered up by 1 x 9V Battery
- Available in silver color
- Requires 4 x AA sized alkaline battery
- 1 Master pin no. made up of 4-12 digits
- Registerable keytags 30max.





**TIESHEN LOCK**  
THE PROFESSIONAL'S CHOICE



**Lock Features:**

**Model no: MR25**

Password sensor card lock

- Random key password protection
- ID card (38 card memory) or password open
- Low battery indicator
- Keyboard Backlight
- Emergency backup power supply 9V
- Emergency Spare key entry
- 9V Battery emergency back up
- Security mode with password or card



[www.alba.com.qa](http://www.alba.com.qa)

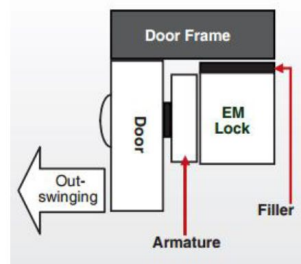
# Electronic Locking Magnet Range



## Slimline Magnetic Lock (600lb)

### Technical specifications

- Aluminium housing.
- 12/24 VDC @480/240mA.
- 280kgs (600lb) holding force.
- Built in surge protection.
- ML600-M = Monitored



ML600 / ML600-M	250x42x25 (mm)	Magnetic Lock 600lb / 280kg	1.97Kg (Boxed) / 1.13Kg (Unboxed)
Armature	180x35x10 (mm)	Metal armature plate	664g (Unboxed)
BK600ZL	Z = 180L (mm)	ZL Bracket	644g (Boxed) / 556g (Unboxed)
BK600L	L = 251L (mm)	L Bracket	188g (Unboxed)

Other items in the RGL range.



Magnet Range

## FIRE TESTED

The ML600 range of magnets and brackets have been fire tested to BSEN1634-1-2014

(30 & 60 minute timber door-sets)

### FEATURES

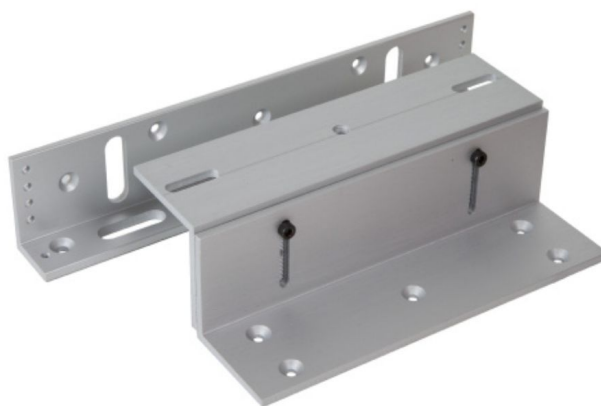
- Slim line mini magnet.
- Clean and compact design in aluminium.
- Single LED indication on ML600
- Multi LED indication on ML600-M
- No residual magnetism

Suitable brackets:

- BK600ZL (ZL Bracket)
- BK600L (L Bracket)
- AH600 (Armature Housing)



# Electronic Locking Magnet Range



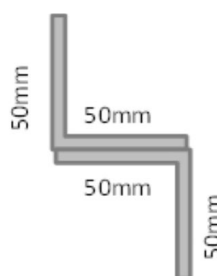
Access Control



## Brackets for Slimline Magnet (600lb)

### Technical specifications

- Adjustable Z & L Brackets
- Adjustable L bracket
- For use with all ML600 range of products
- Can be fitted with BK600U for glass doors



### FEATURES

- BK600ZL (ZL bracket)
- BK600L (L bracket)

BK600ZL	Z = 180L (mm)	ZL Bracket	644g (Boxed) / 556g (Unboxed)
BK600L	L = 251L (mm)	L Bracket	188g (Unboxed)

Other items in the RGL range.







# الـبـالـتـجـارـة الـأـقـصـال

## Advance Locks & Bio-metric Access



# ORVIBO

### Features:

- Input~100-240V~, 50H, 13A
- Max Output~100-240V~, 50H, 13A
- Wireless standard~Wi-Fi 2.4GHz
- Radio frequency~2.412-2.484GHz
- Encryption type~WEP/TKIP/AES
- Security protocol~WEP/WPA-PSK/WPA2-PSK
- Radio power consumption≥0.3W
- Working temp -10~40° C
- Storage temp -40~70° C
- Testing temp 25° C

**ORVIBO B25UK**  
**Smart Wifi Socket**



Download The App:

**SET UP THE TIME TO TURN ON AND OFF THE OVEN, TV,  
TABLE LAMP, THINGS JUST WORK AS YOUR WISH.**

Life becomes so easy and comfortable, ORVIBO wifi smart plug saves your precious time and make everything Work automatically.

Tel: +97444319422 | Fax: +97444316074 | PO Box: 32198 | Doha - Qatar

تيليفون: +97444319422 | فاكس: +97444316074 | ص ب: 32198 | الدوحة - قطر

Email: alba@alba.com.qa

Website: www.alba.com.qa



# الـبـالـتـجـارـة الـأـقـصـال

## Advance Locks & Bio-metric Access



# ORVIBO

### Features:

- Wireless Standard: IEEE 802.11 b/g/n
- Infrared Frequency: 20~60KHz
- Case Material: PC + ABS + TPU
- Product Size: 53x53x54mm
- Infrared Transmittance: 93%
- Infrared Remote Distance: 8m+
- Infrared Remote Angle: 360°
- Supported IR Appliance Brand: 8000+



## SMART WIFI IR BLASTER MAGIC CUBE



Download The App:

### WE ARE IMPROVING YOUR WAY OF LIFE.

A magic cube instead of all your remote controllers

**ONE SMART PHONE CAN CONTROL MOST OF IR APPLIANCES**

Support more than 8000 different brands of IR appliances  
(TV, A/C, Fan, TV Box, Projector, DVD, Home Speaker, etc..)

in the market ...

Tel: +97444319422 | Fax: +97444316074 | PO Box: 32198 | Doha - Qatar

تيليفون: +٩٧٤٤٤٣١٩٤٢٢ | فاكس: +٩٧٤٤٤٣١٦٠٧٤ | ص ب: ٣٢١٩٨ | الدوحة - قطر

Email: alba@alba.com.qa

Website: www.alba.com.qa